

**How-to:**

**Install Windows System on Mac (via Boot Camp)**

Issued by: Acronova Technology, Inc.  
Document: #HT-2314

This how-to article guides the installation of Windows 7 or XP on Mac, so as to run Nimbie USB series autoloader on Mac with Windows-compatible software.

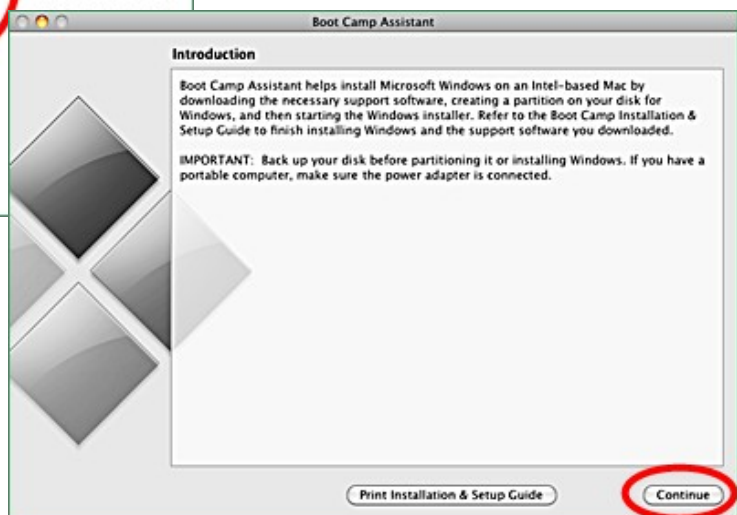
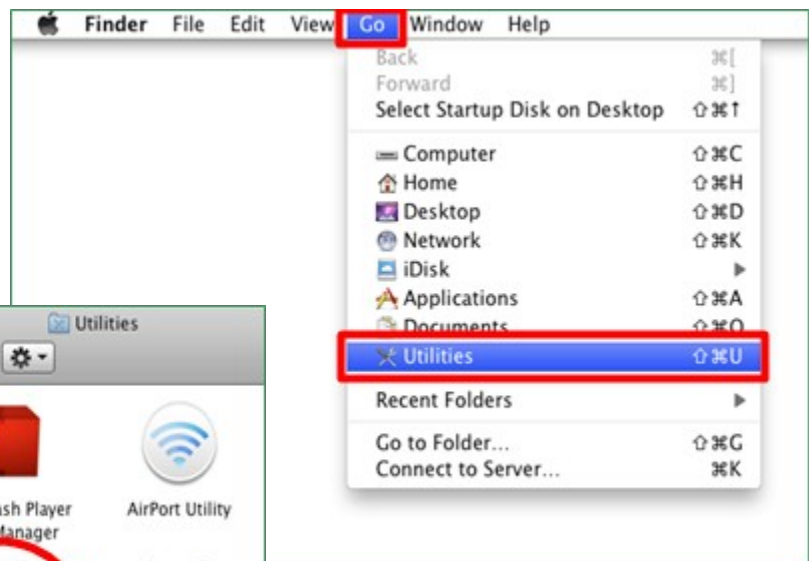
**To install Windows 7 on Mac with Boot Camp, you shall need the following:**

- Update Mac to the latest firmware (use Apple Button -> Software Update).
- Upgrade Mac to OS X 10.5 or later version (OS X or 10.5 or later version comes with Boot Camp).
- The OS X Installation Disc.
- The Windows 7 Installation Disc (or Windows XP instead).
- Around 30GB of hard drive space on your Mac for the installation of Windows System.

**Step-by-step guide:**

Step 1):  
On the host running Mac OS, click  
“Go” -> “Utilities” ▶▶

Step 2):  
Double click “Boot Camp Assistant” to  
start Boot Camp installation. ▼▼



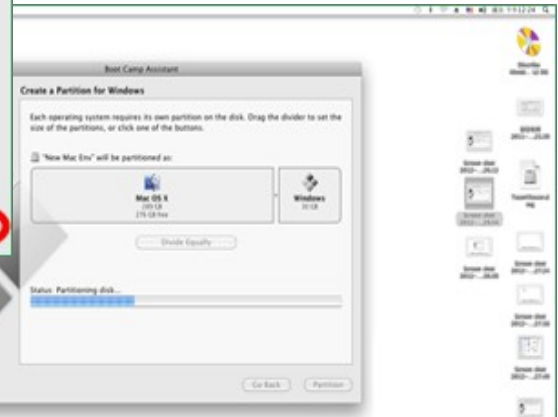
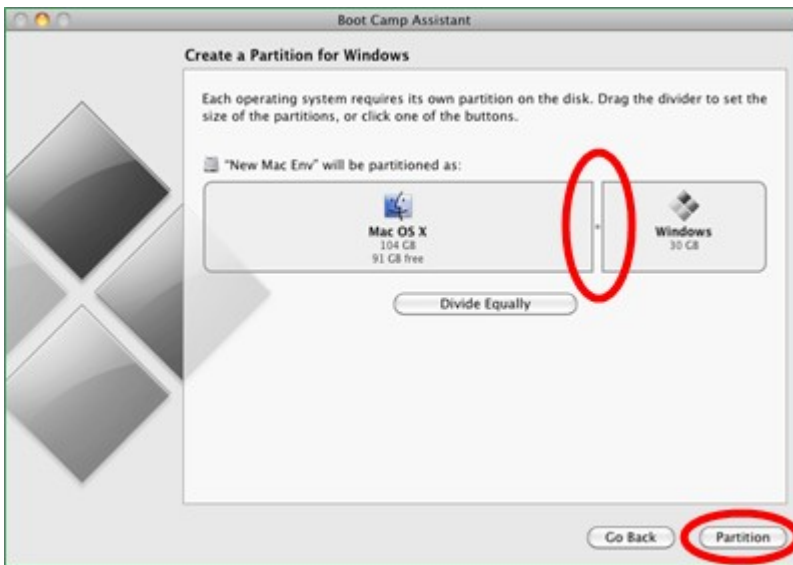
Step 3):  
On Boot Camp Assistant window, click  
“Continue”. ▶▶

Step 4):  
Choose the second option and click  
“Continue”. ▶▶

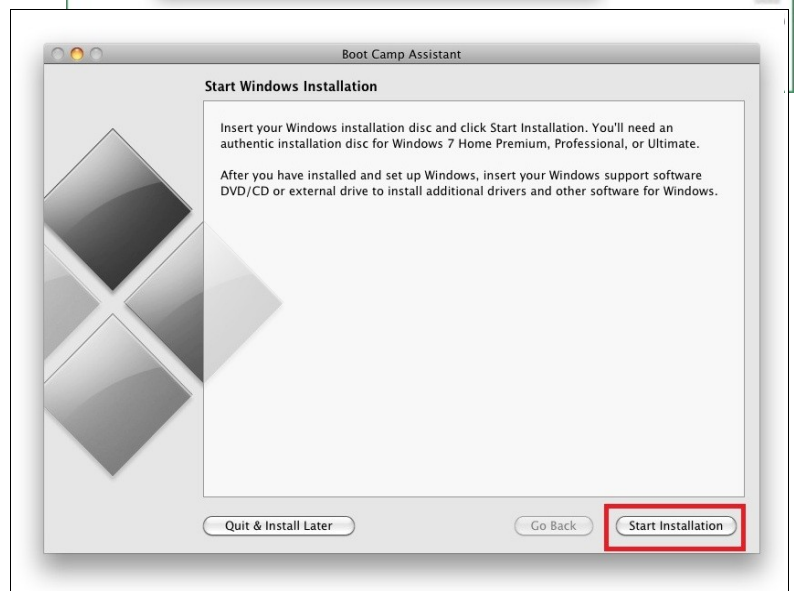
Step 5):  
Decide how many hard disc space to allocate to  
Windows System (30GB recommended).

To change the amount of disc space, click and  
hold the divider between Mac OS X and  
Windows, drag it to the left or to the right  
appropriately.

Then, click “Partition” to go on. ▼▼



A window shall pop up showing the  
operation progress. Wait until the partition  
has completed. ▶▶



Step 6):  
Now insert your Windows  
Installation Disc and click “Start  
Installation”. ▶▶

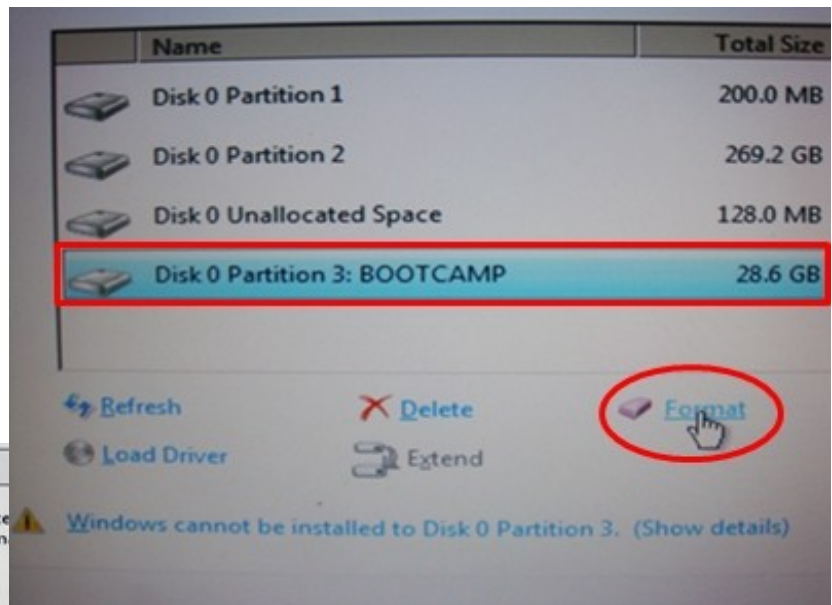
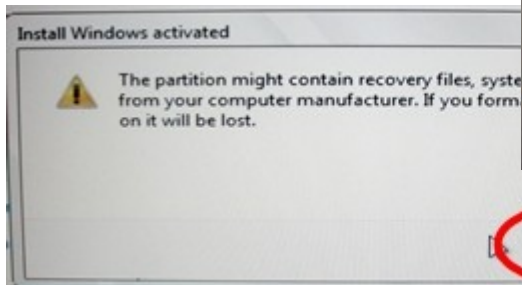
Step 7):

Your Mac will restart and boot into Windows 7 or Windows XP.

You'll be prompted for choosing the partition to install Windows System. Select the one with BOOTCAMP in the Name column, then click "Format". ▶▶

Step 8):

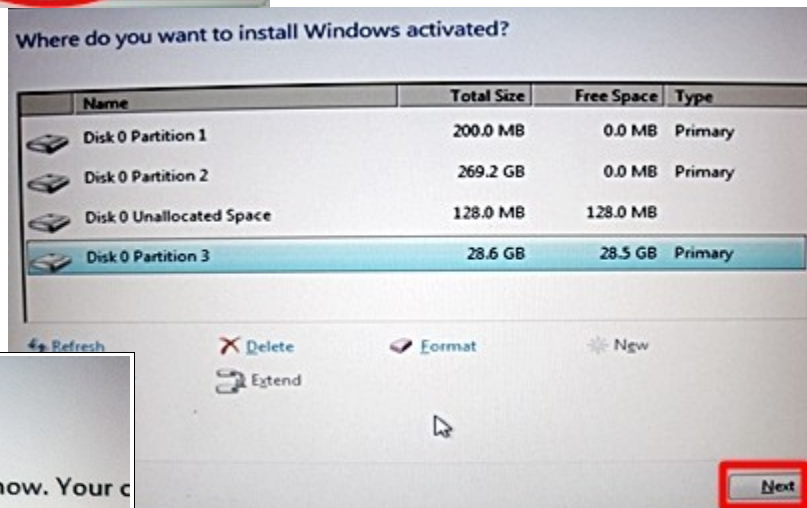
A warning message will pop up. Click "OK" to go on. ▼▼



Step 9):

Click "Next" to go on the Installation of Windows System. ▶▶

The installation will begin. ▼▼



After a while, your Mac will automatically boot back into Windows 7. You'll be prompted to select the language, keyboard layout... etc.

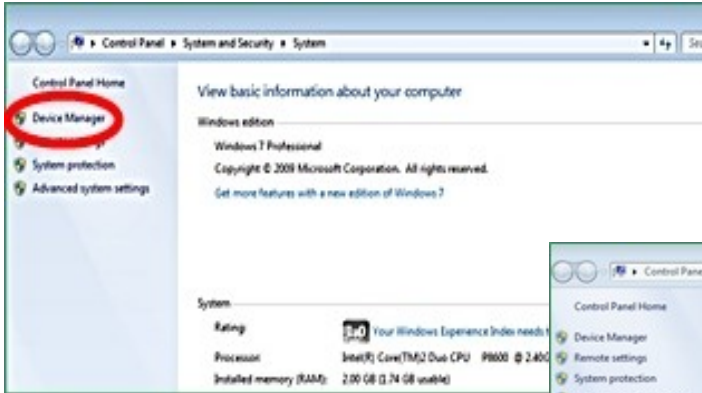
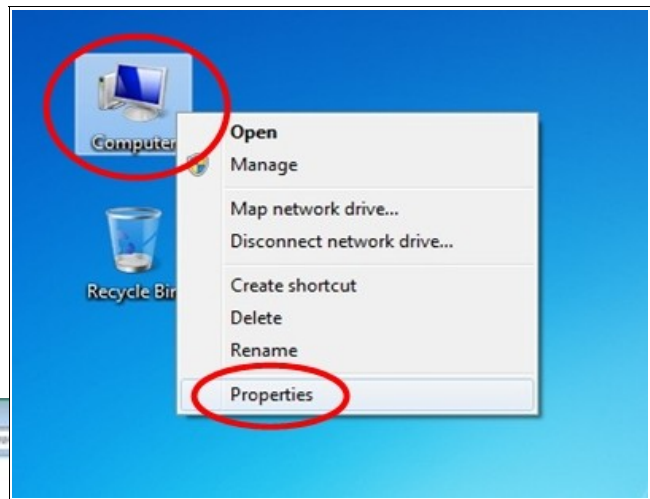
The rest of the Windows installation process is very straight forward. Follow the on-screen instructions to go on.

Once the installation has completed, your Mac will restart.

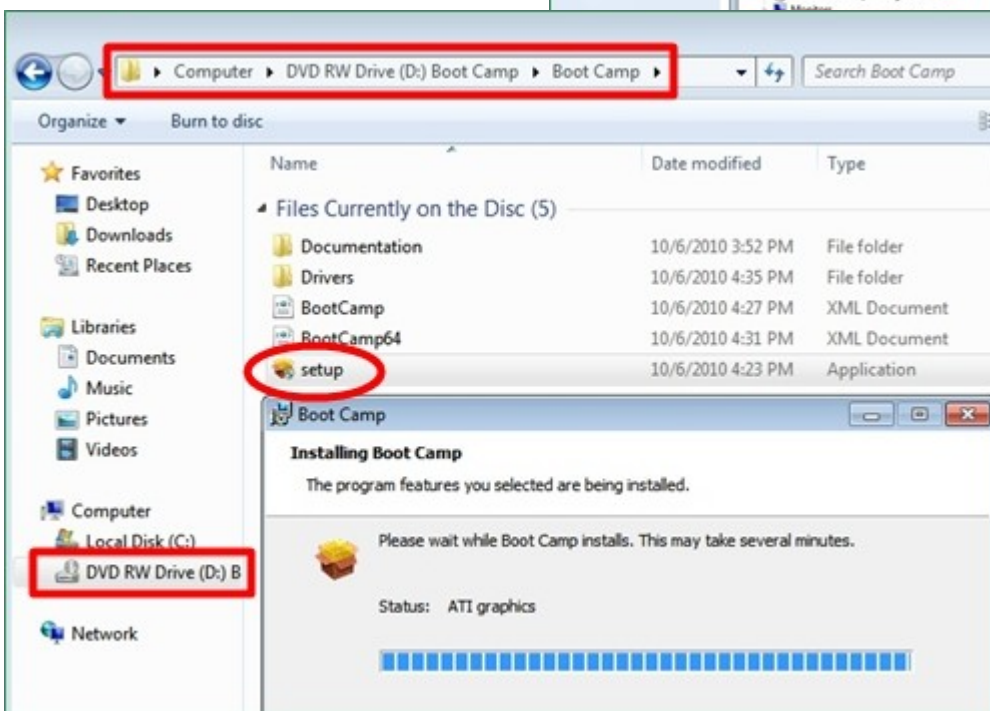
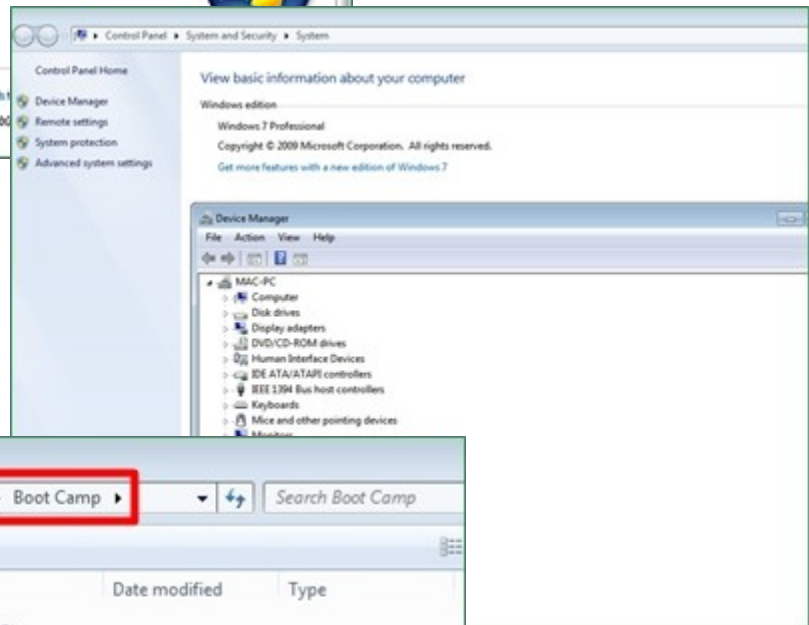
Step 10):  
Certain device drivers are not included on Window Installation Disc, you shall need OS X Installation Disc to install these drivers.

To check whether the drivers are installed or not, right click at “Computer”. Then, select “Properties” on the pop-up window. ▶▶

On Property window, click “Device Manager”. ▼▼



As indicated in the figure on the right, there are Device Drivers not been installed. ▶▶



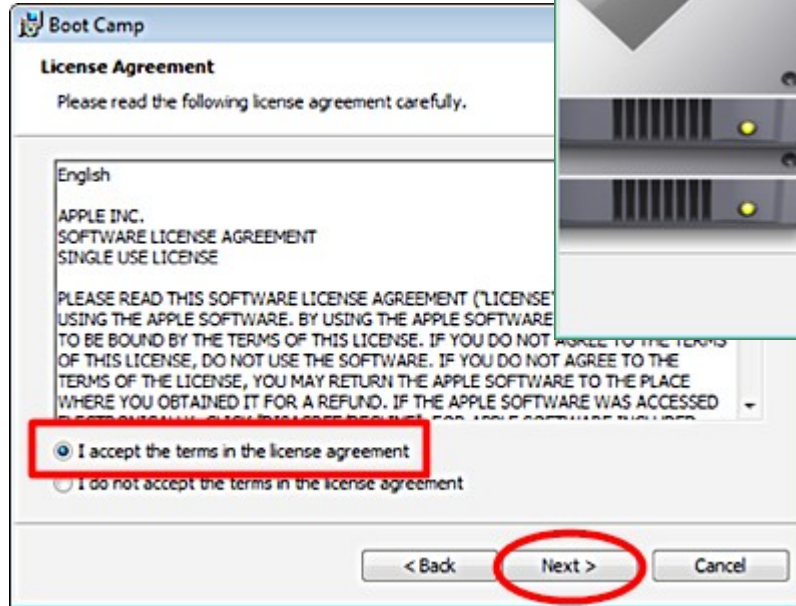
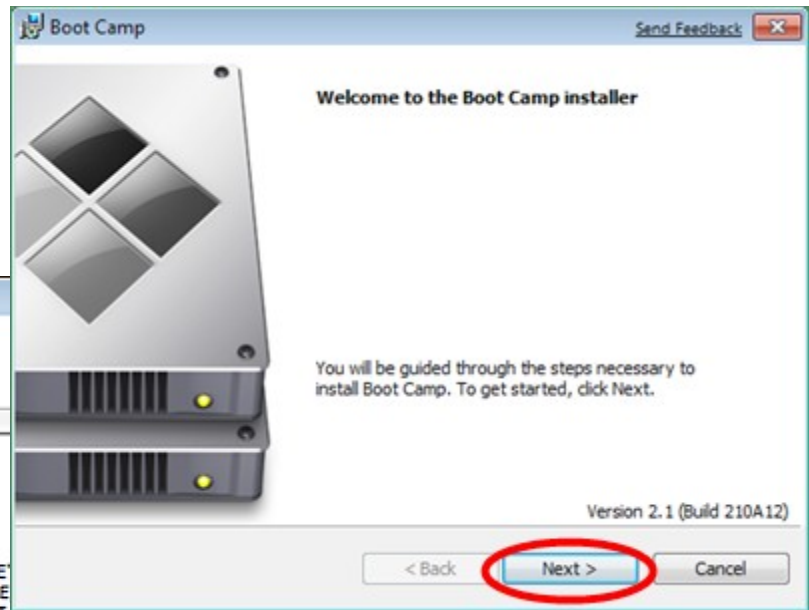
Step 11):  
To install the drivers, insert your OS X Installation Disc.

Go to Boot Camp folder and double click “setup” ◀◀

Step 12):

After a while, the Boot Camp installer launches. Click “Next”. ►►

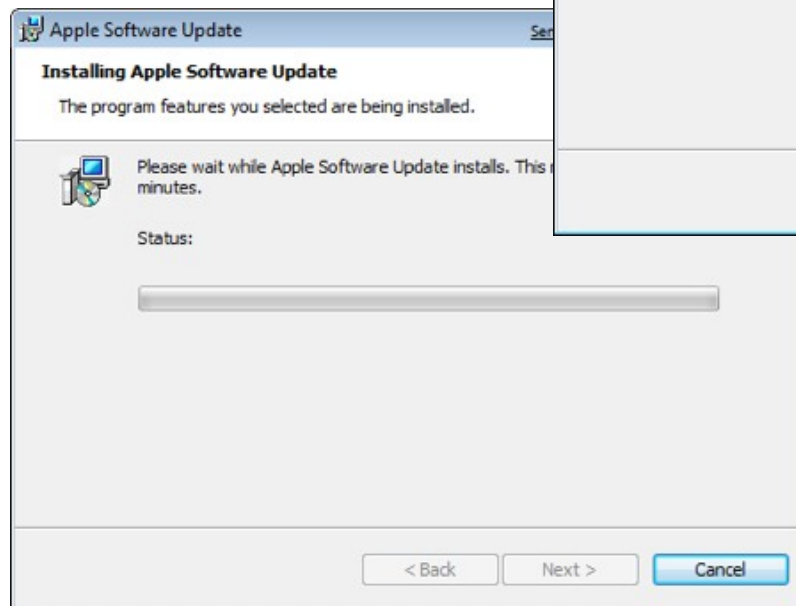
Select “I accept the terms in the license agreement” and click “Next”. ▼▼



Step 13):

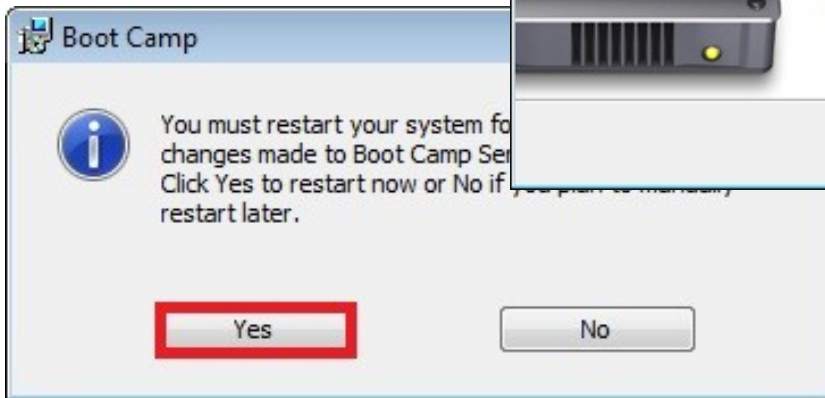
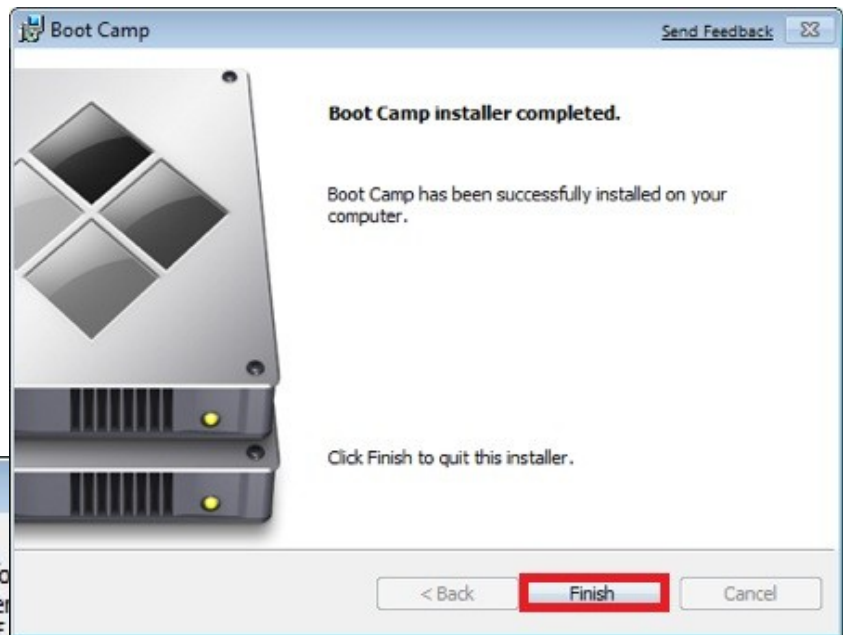
Make sure that Apple Software Update for Windows is checked, and click “Install”. ►►

The Boot Camp installer will do its thing, and install all the required drivers. ▼▼

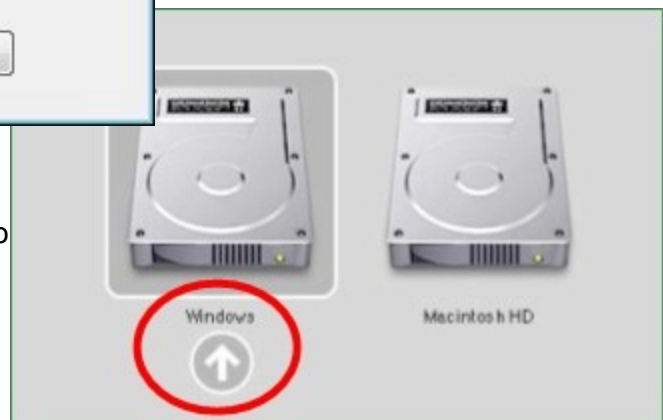


Step 14):  
Once completed, click "Finish". ▶▶

Step 15):  
You'll be prompted to reboot.  
Remove your OS X Installation Disc  
from the drive, and click "Yes" to  
restart. ▼▼



Step 16):  
When your Mac boots, hold down the Option key to  
select which Operating System you would like to  
boot into. ▶▶



Now, you may find the device drivers are all installed  
and Windows System is ready to use.

Enjoy!!!



- ☀☀☀☀ -

Nimbie-USB is a 100-disc autoloader, which can be connected to personal computer for automated duplication, ripping and labeling of BD/CD/DVD.

Nimbie-Standalone does not require a computer connection. Just load the discs and push a button, the automated duplication will start until all the discs were processed.

Nimbie NK50V- The auto disc loader attachment turns your EPSON printer into an automated disc publisher.

Nimbie NK50Y- an affordable disc publishing system burns and prints disc in one simple procedure.

For information about Nimbie autoloader and other automated disc-processing devices, visit: <http://www.acronova.com>

For a video version, visit: [http://www.youtube.com/watch?v=yA\\_I8SWKPx&feature=youtu.be](http://www.youtube.com/watch?v=yA_I8SWKPx&feature=youtu.be)

- ### -